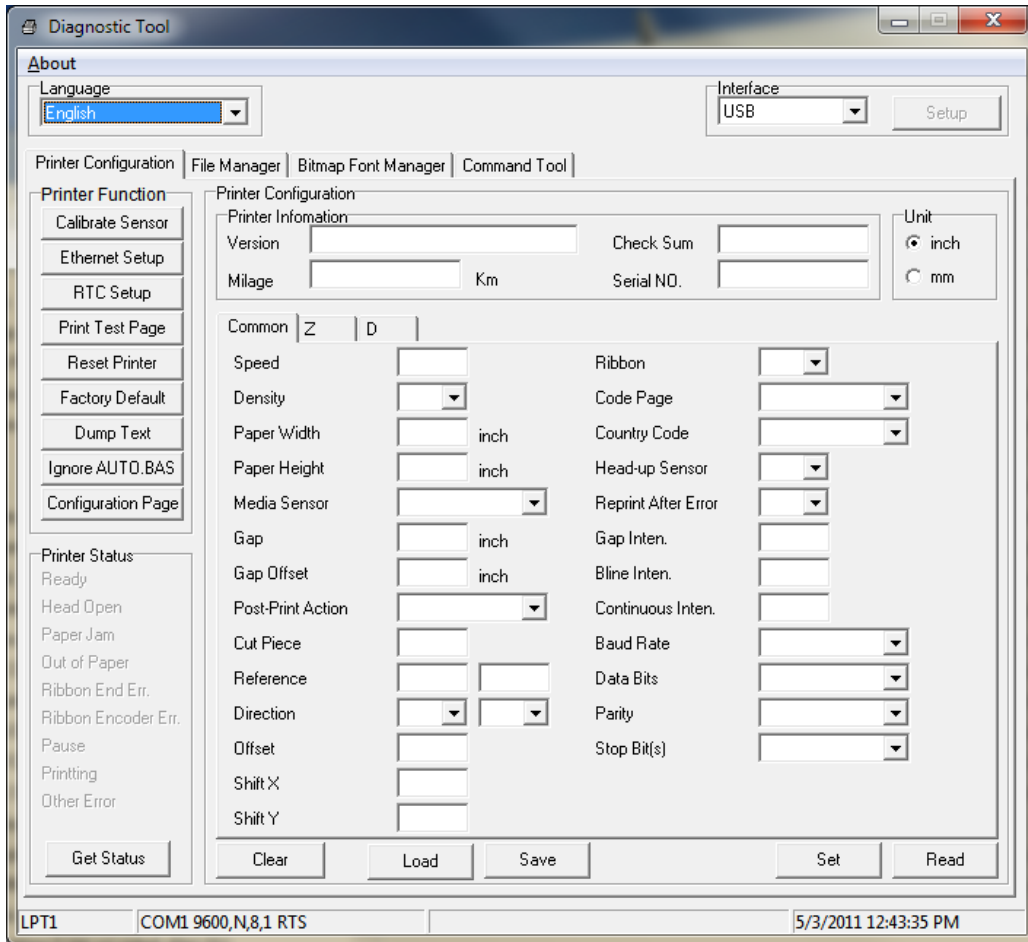
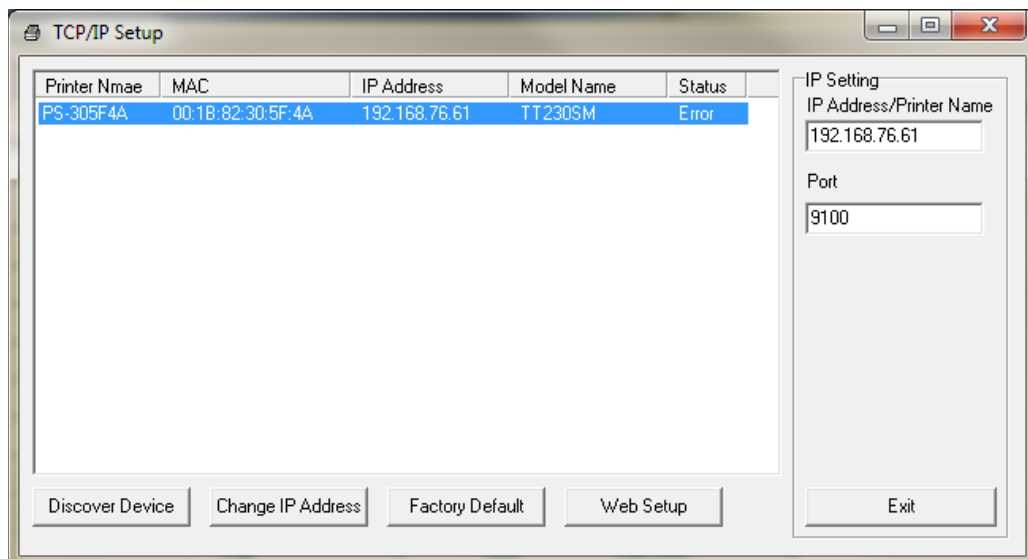


## Setting up a TT230SM on a network.

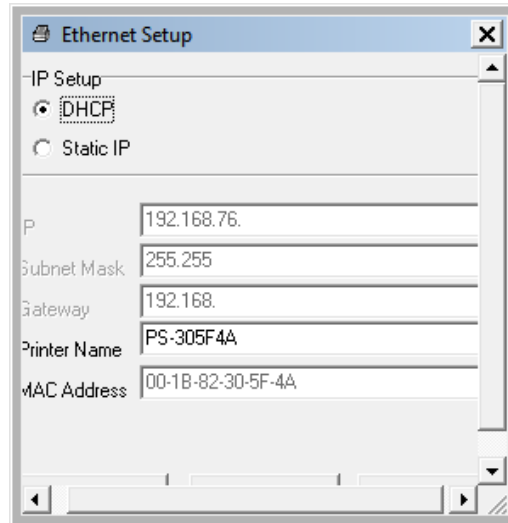
1. Find the Diagnostic Tool located on the USB Key drive that came with the printer. Make sure printer is plugged into the network and powered on.
  - a. The File will be called DIAGTOOL\_128.exe



2. Select Interface to ETHERNET and SETUP.

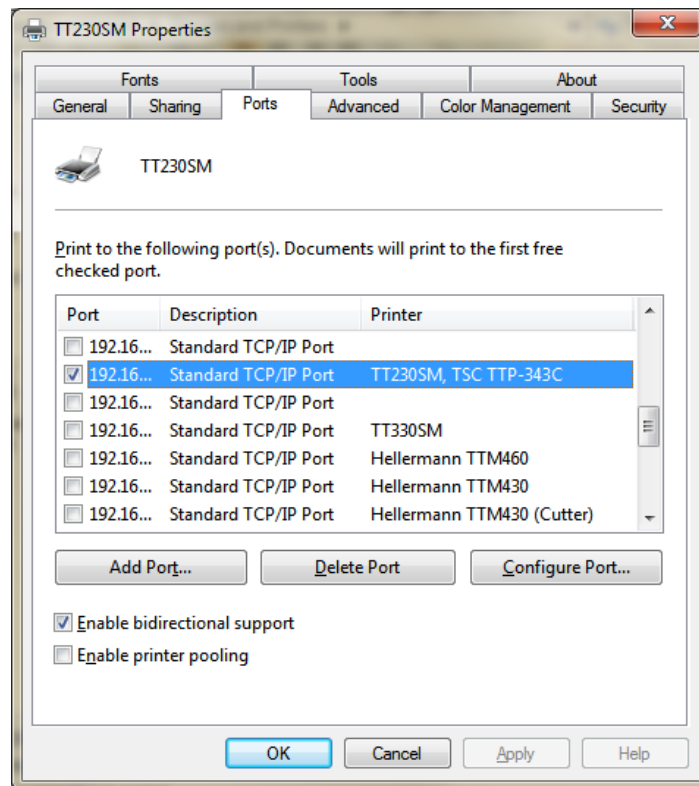


You can discover device and find the IP address given. Or you can return to the main program and run the ETHERNET SETUP button on the left side.



Once you have the IP address you can change the driver.

Go to your Printers and Faxes folder and find the TT230SM driver, right mouse click and go to Properties. Find the Ports Tab and add a port



Add a generic port for the IP address for the printer. Then save and test.

The MAC address is located on the bottom of the printer near the manufactures label, white label at bottom.

You can also get to the IP address DHCP and MAC address by doing a test print.

1. Put some wide paper labels into the printer
2. Turn printer off
3. Hold down button on top and turn printer on.
4. The printer will flash, on the third set of flashes let go of button
5. The printer will print out a test print, on this test print is the MAC and IP.

Use that to set the driver.