

# Quick Start Manual



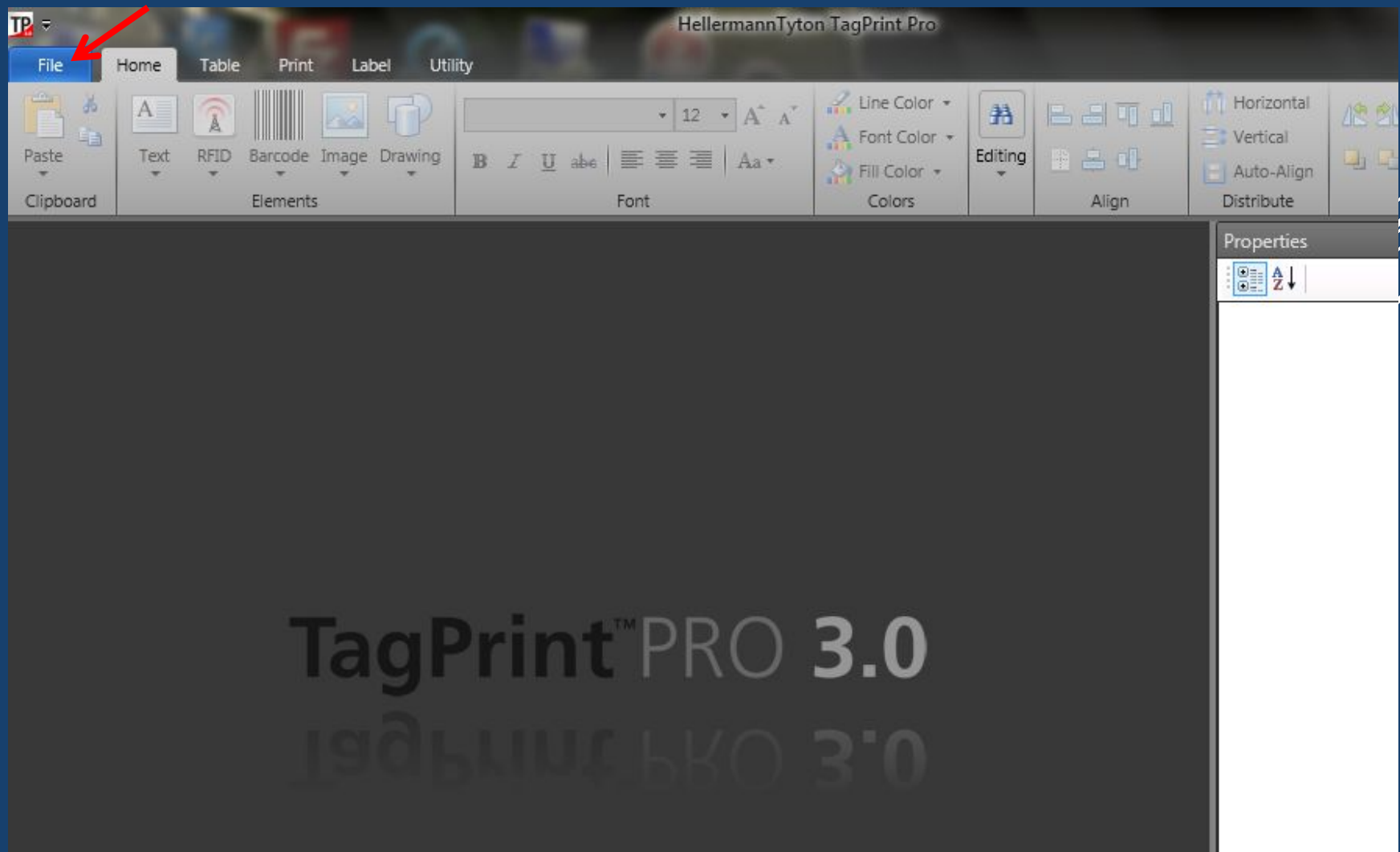
Step by Step instructions for printing pre-saved solar templates

# TAGPRINT 4.0

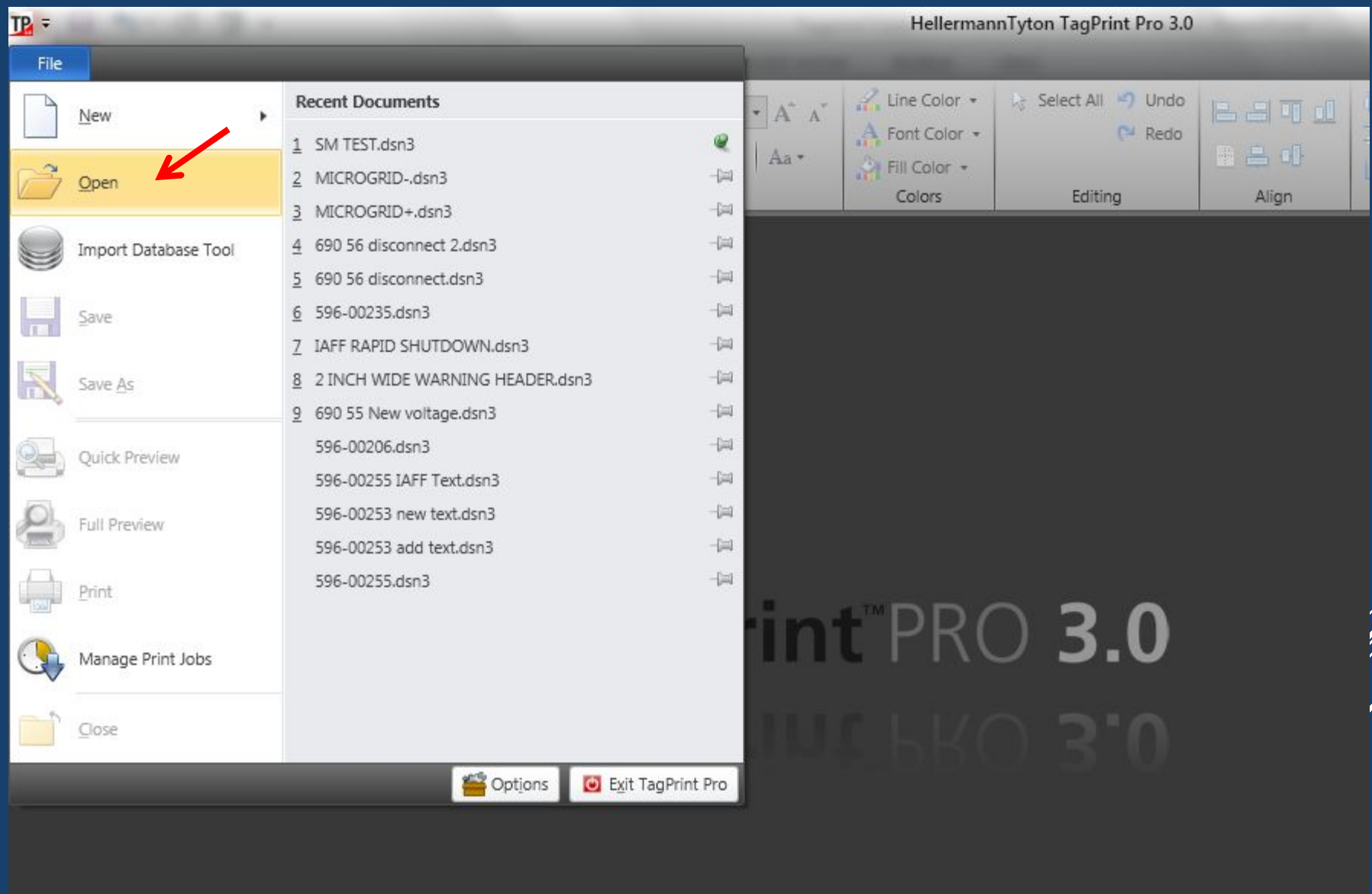
Guide to printing pre-made templates in Tagprint Pro 4.0

THESE INSTRUCTIONS ARE FOR OPENING  
AND PRINTING A PRE-MADE TEMPLATE  
USING THE BANDED COLORED  
CONTINUOUS ROLLS.

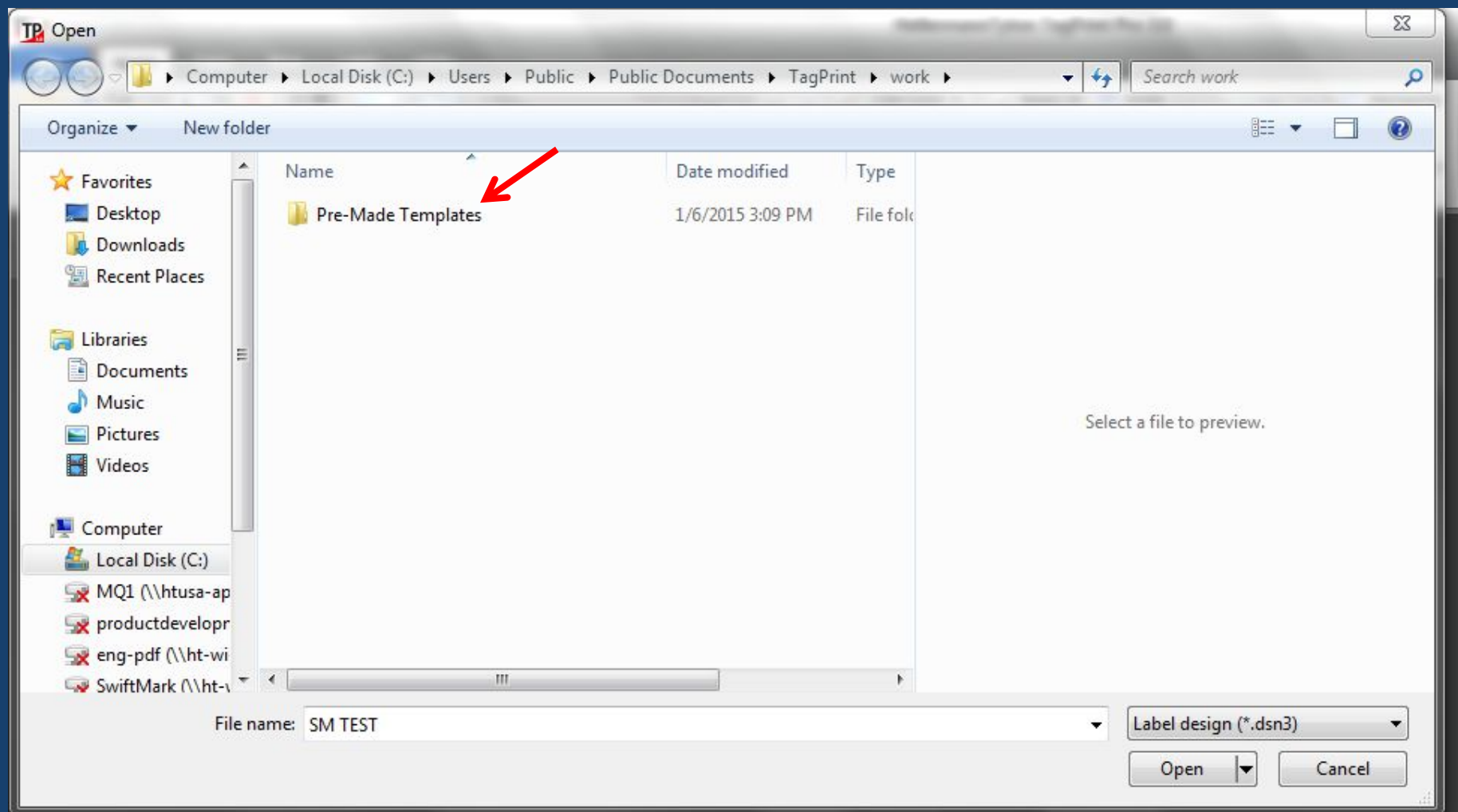




OPEN TAGPRINT PRO 4.0 AND CLICK ON FILE.

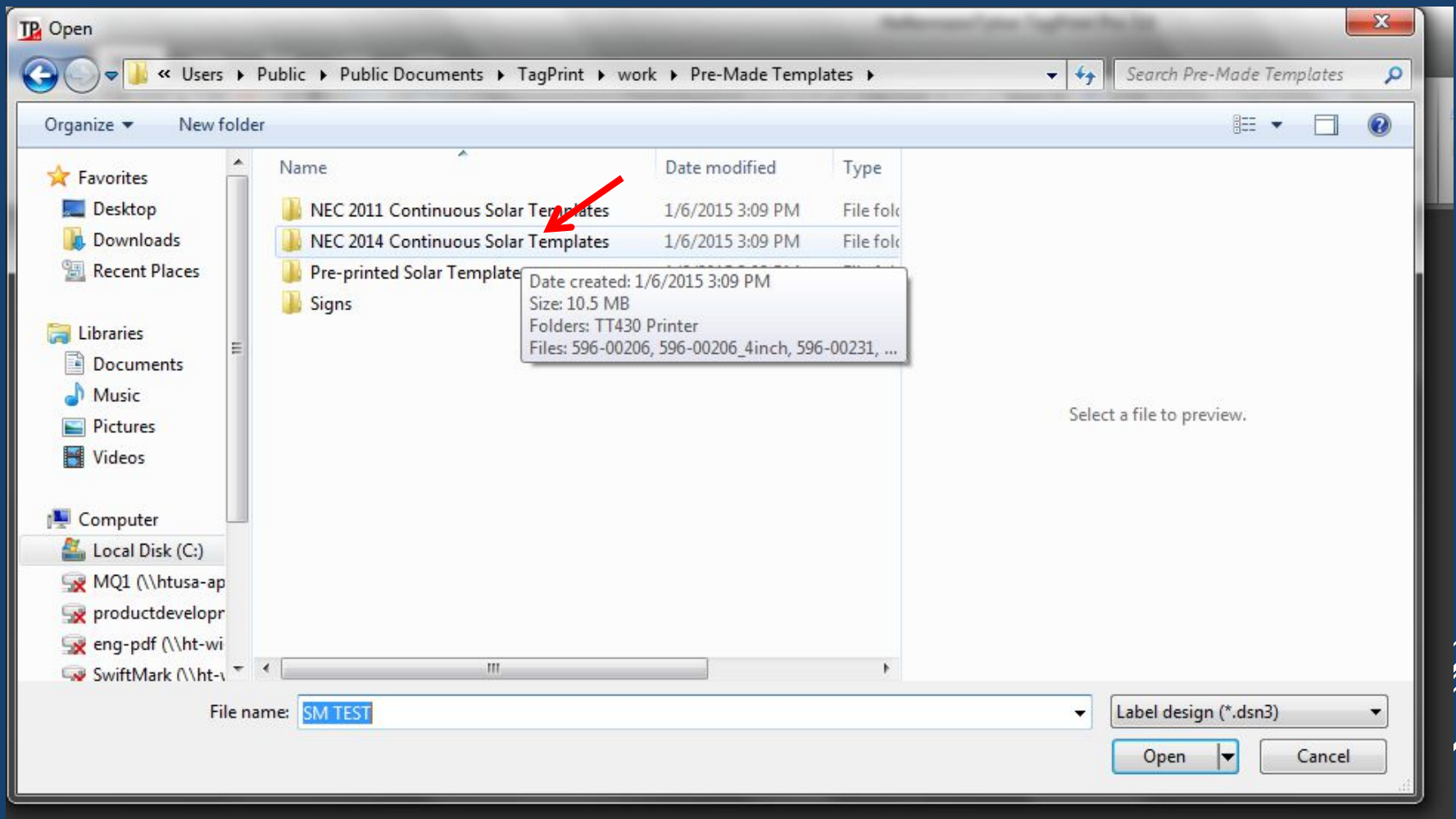


CLICK ON OPEN.

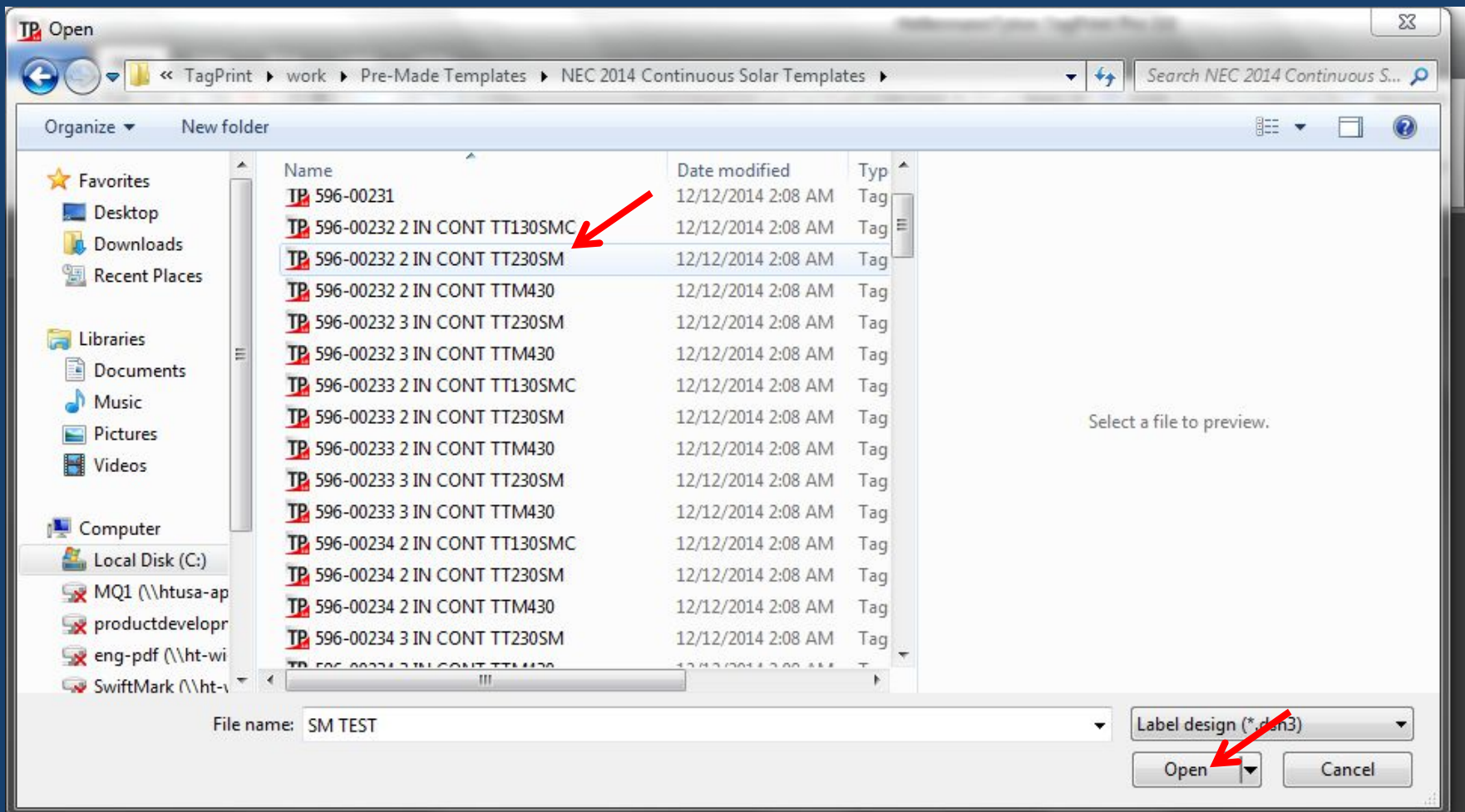


CLICK ON PRE-MADE TEMPLATES.



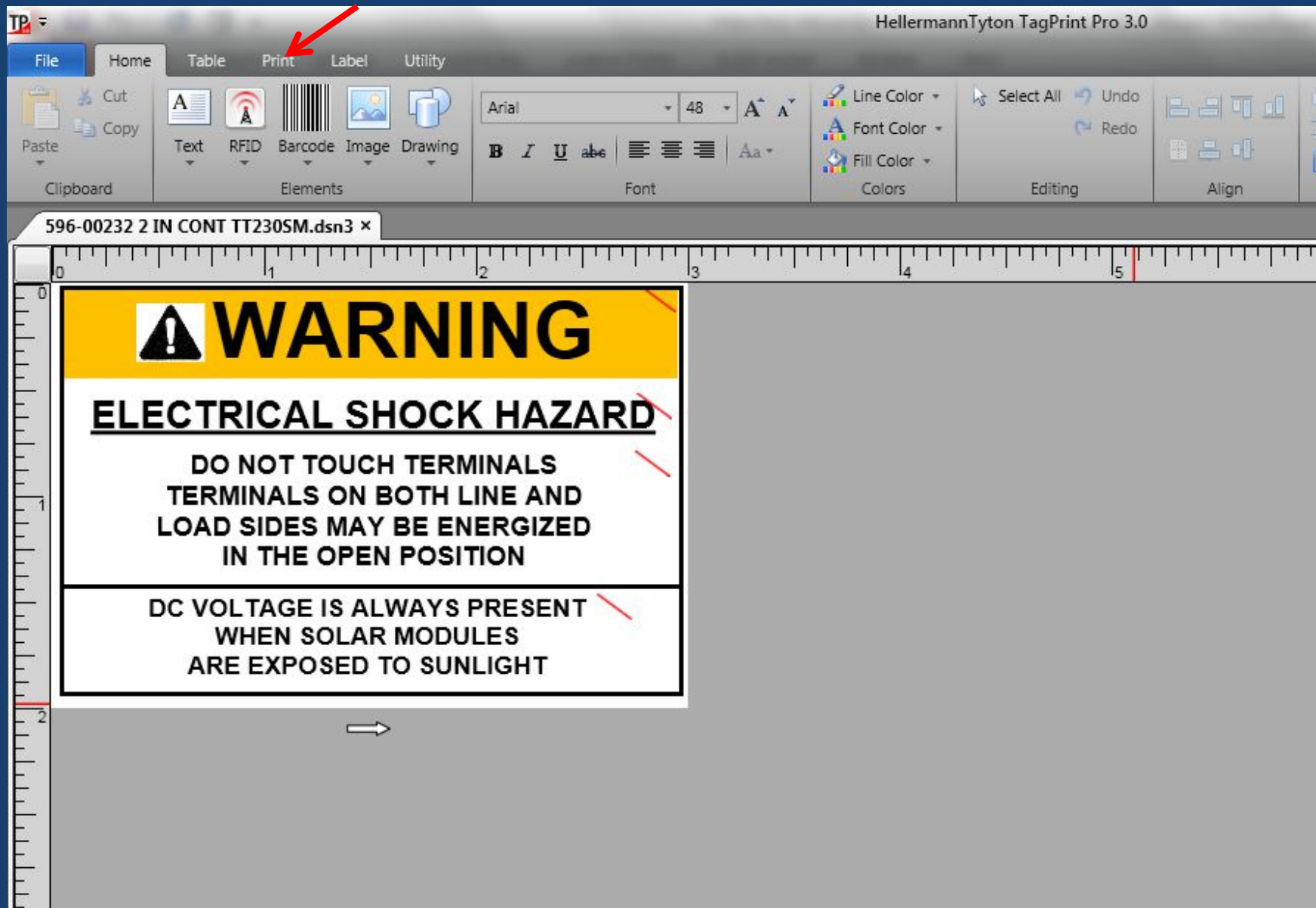


CLICK ON NEC 2014 CONTINUOUS SOLAR TEMPLATES AS EXAMPLE.

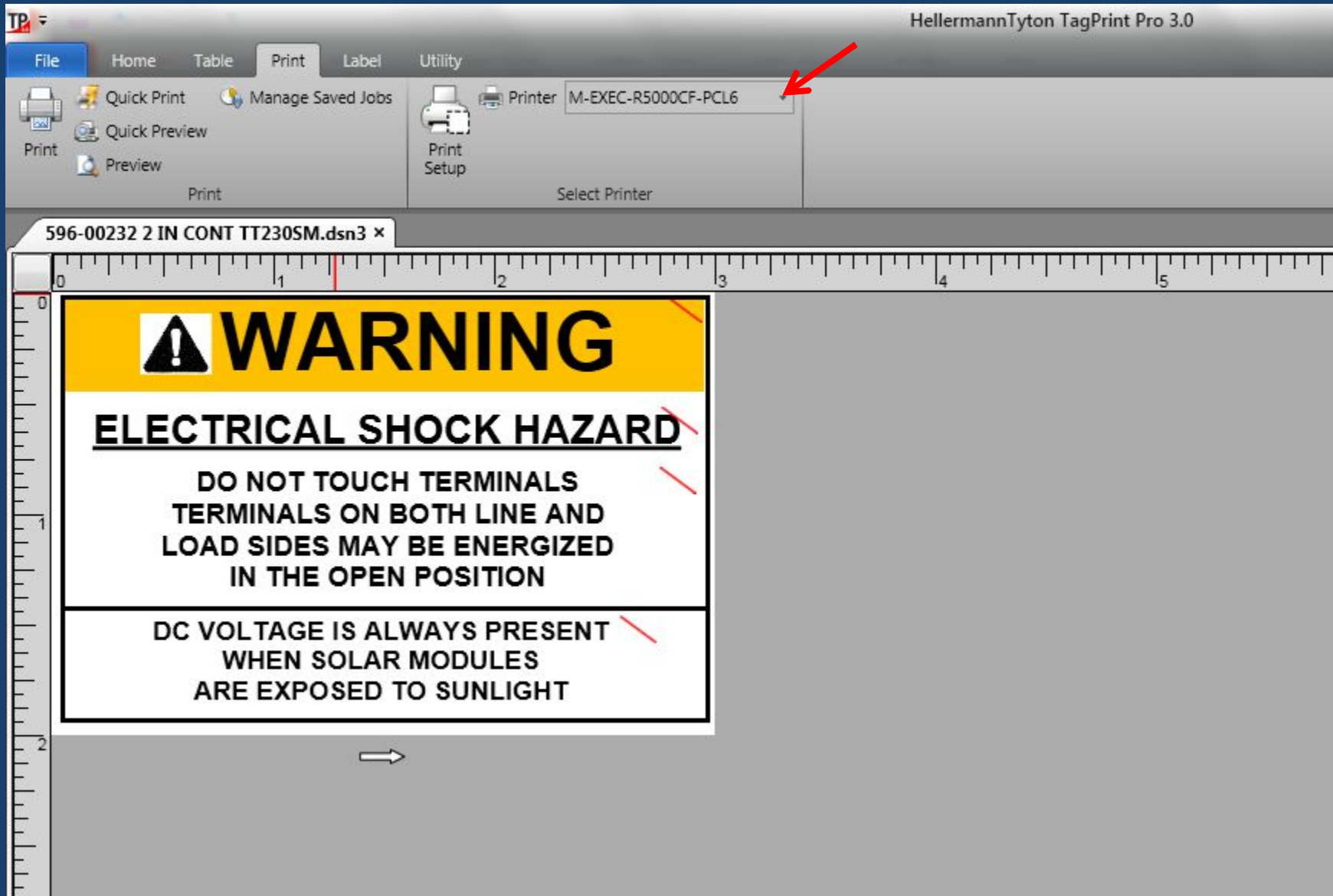


IF USING 2" WIDE PRE-PRINTED CONTINUOUS COLORED SIGNAL PANEL LABELS, SELECT 596-00232 for the TT230SM SERIES PRINTER. IF USING 3" WIDE STOCK, THEN SELECT A 3" WIDE STOCK FOR THE SAME PRINTER. CLICK TO SELECT AND CLICK ON OPEN

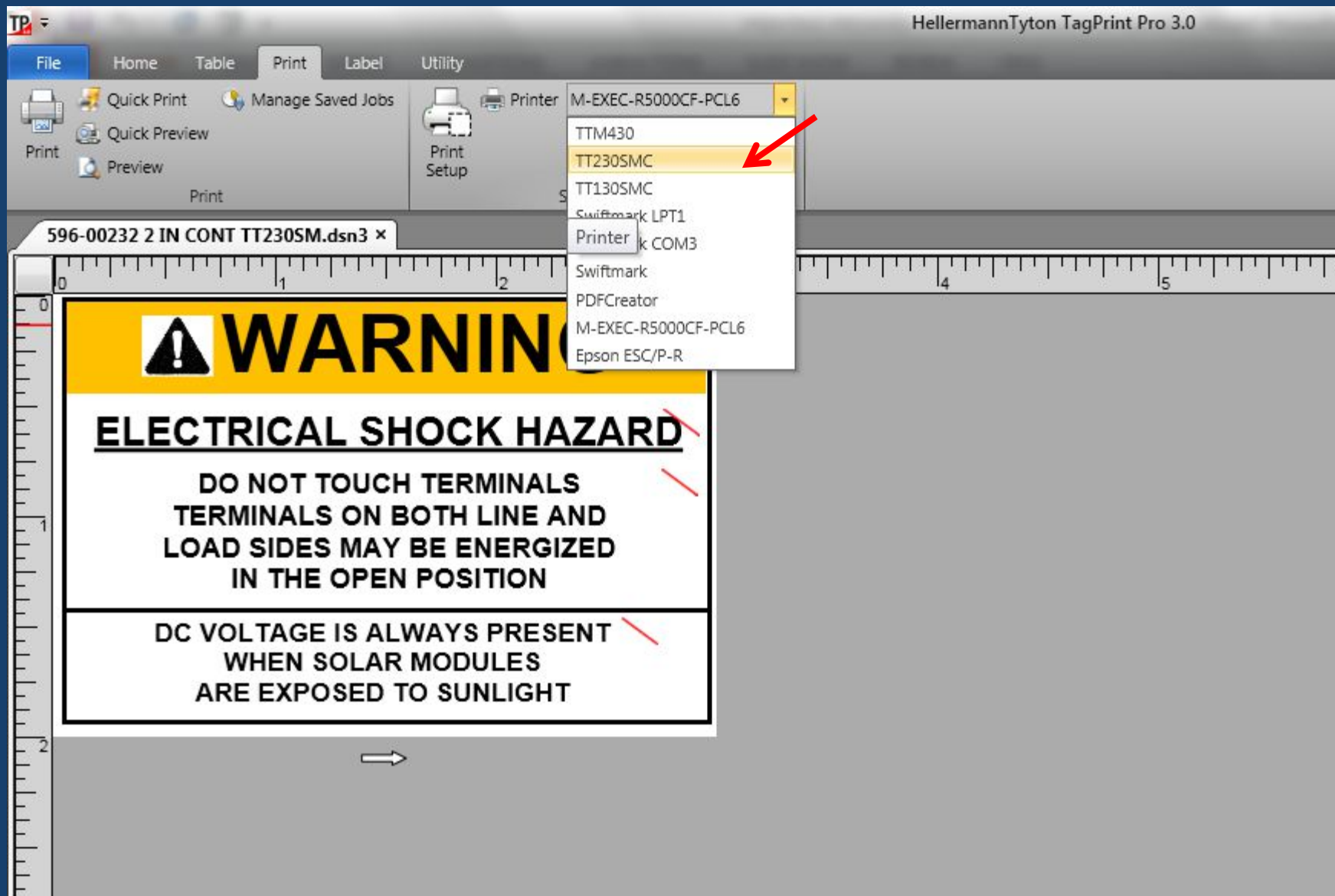




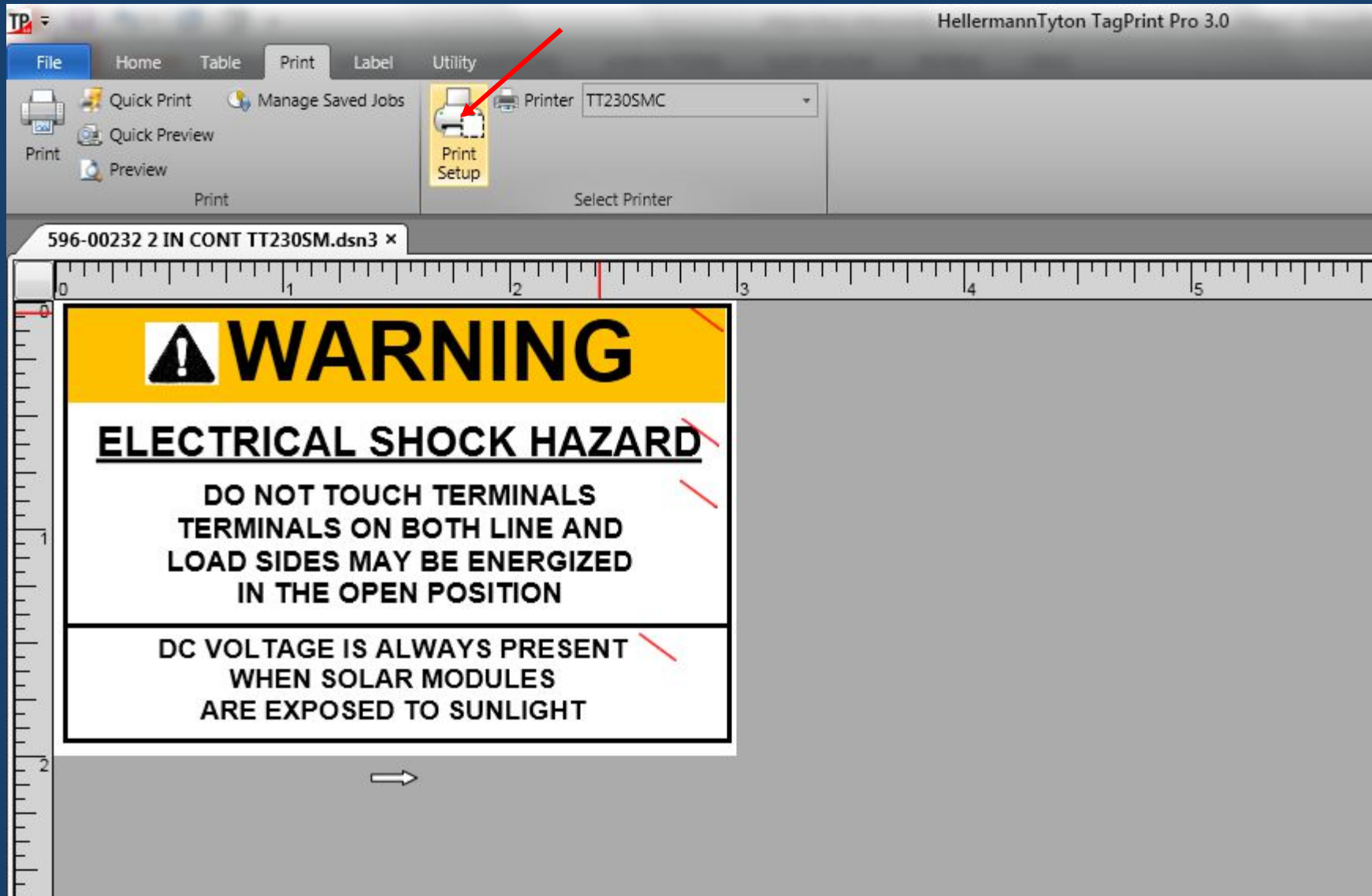
THE LABEL WILL OPEN AS SHOWN. TO SELECT OTHERS SOLAR LABELS, CONSULT THE HELLERMANNTYTON CATALOG AND SELECT THE PART NUMBER FROM THE PRE-MAVED TEMPLATE LIST IN TAGPRINT PRO 4.0. CLICK ON PRINT TAB ON THE TAB MENU AT THE TOP OF THE SCREEN.



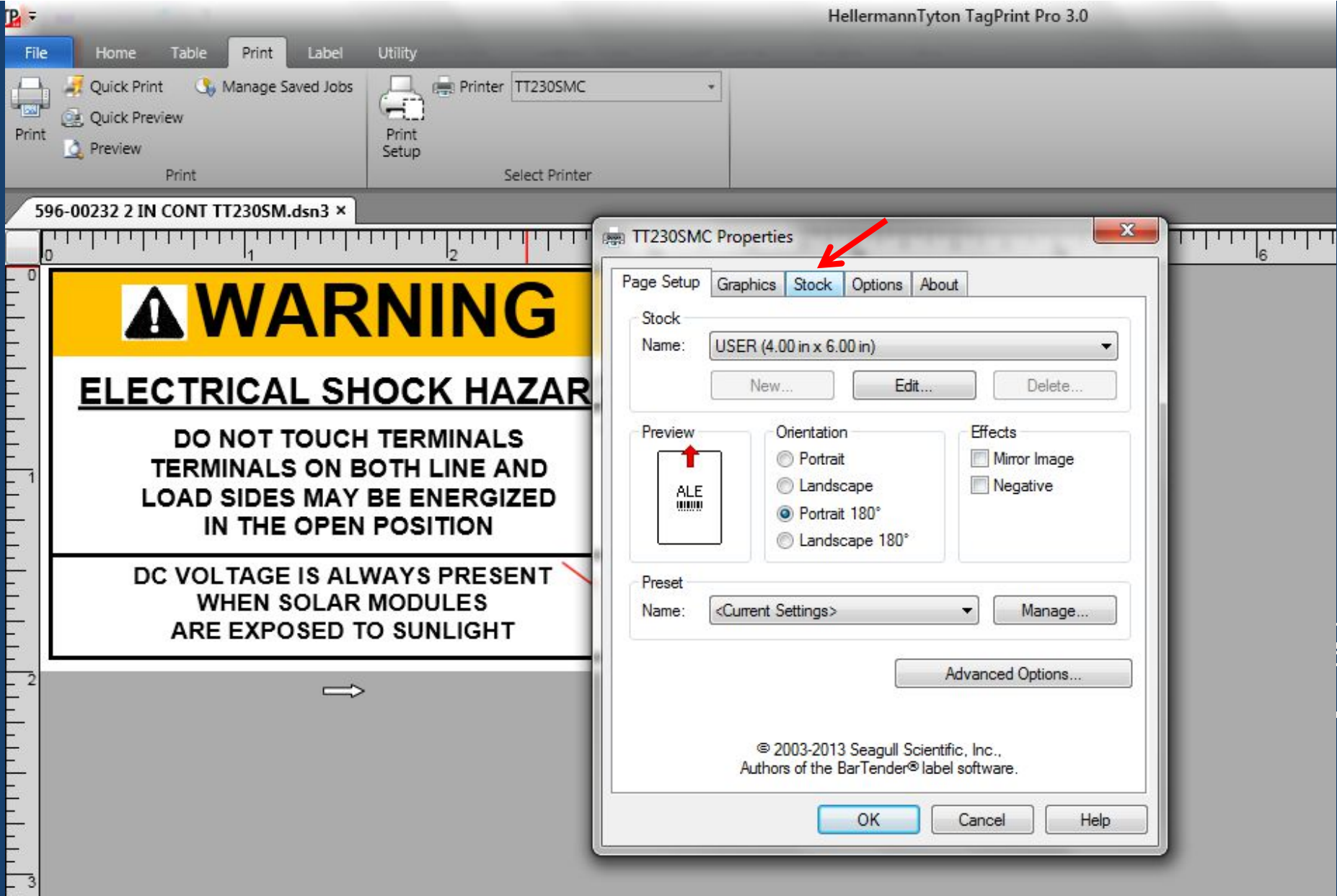
CLICK ON THE DOWN ARROW NEXT TO THE PRINTER NAME BOX TO EXPAND THE LIST OF PRINTER OPTIONS.



CLICK ON THE TT230SMC PRINTER DRIVER.

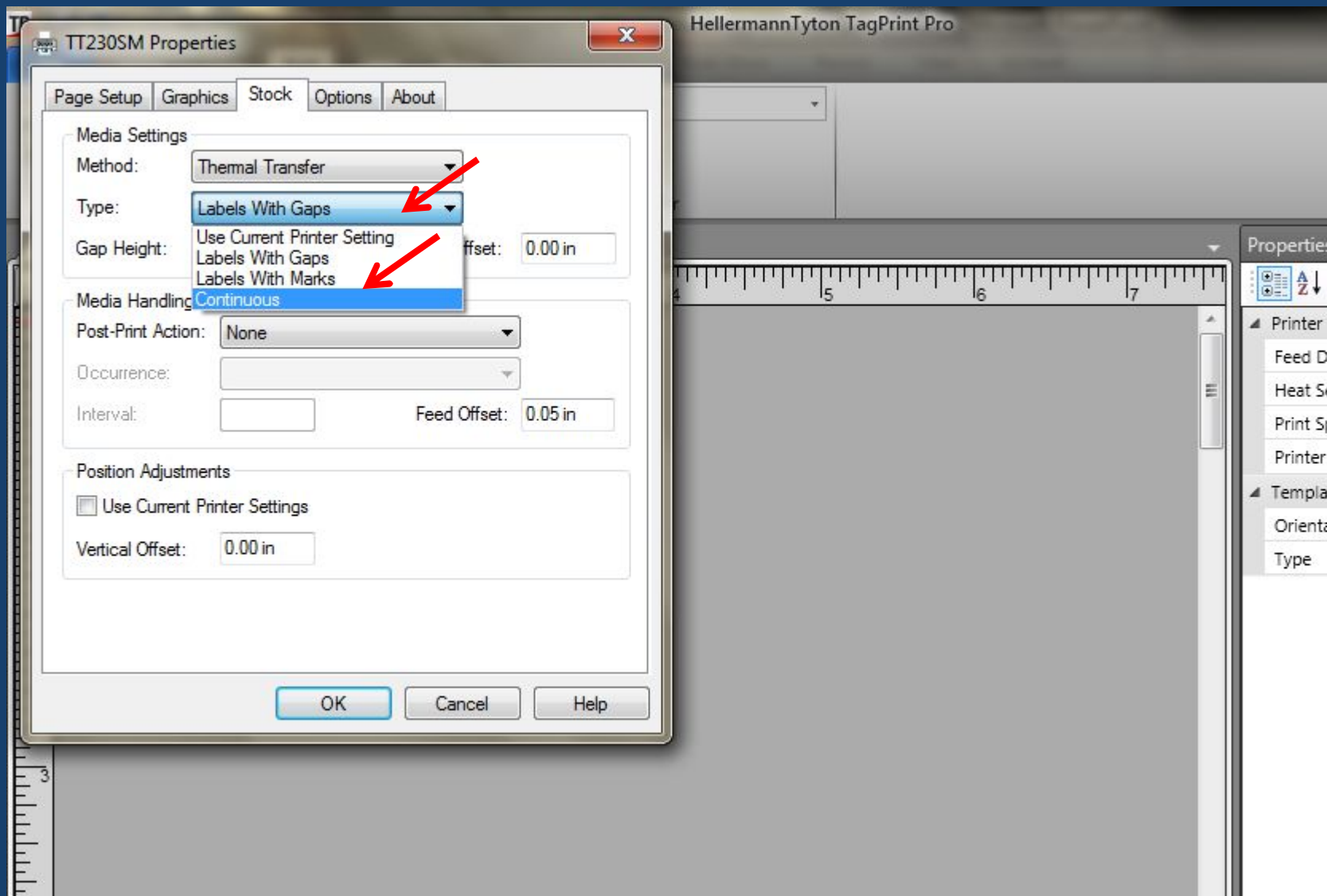


CLICK ON THE PRINTER SETUP TAB

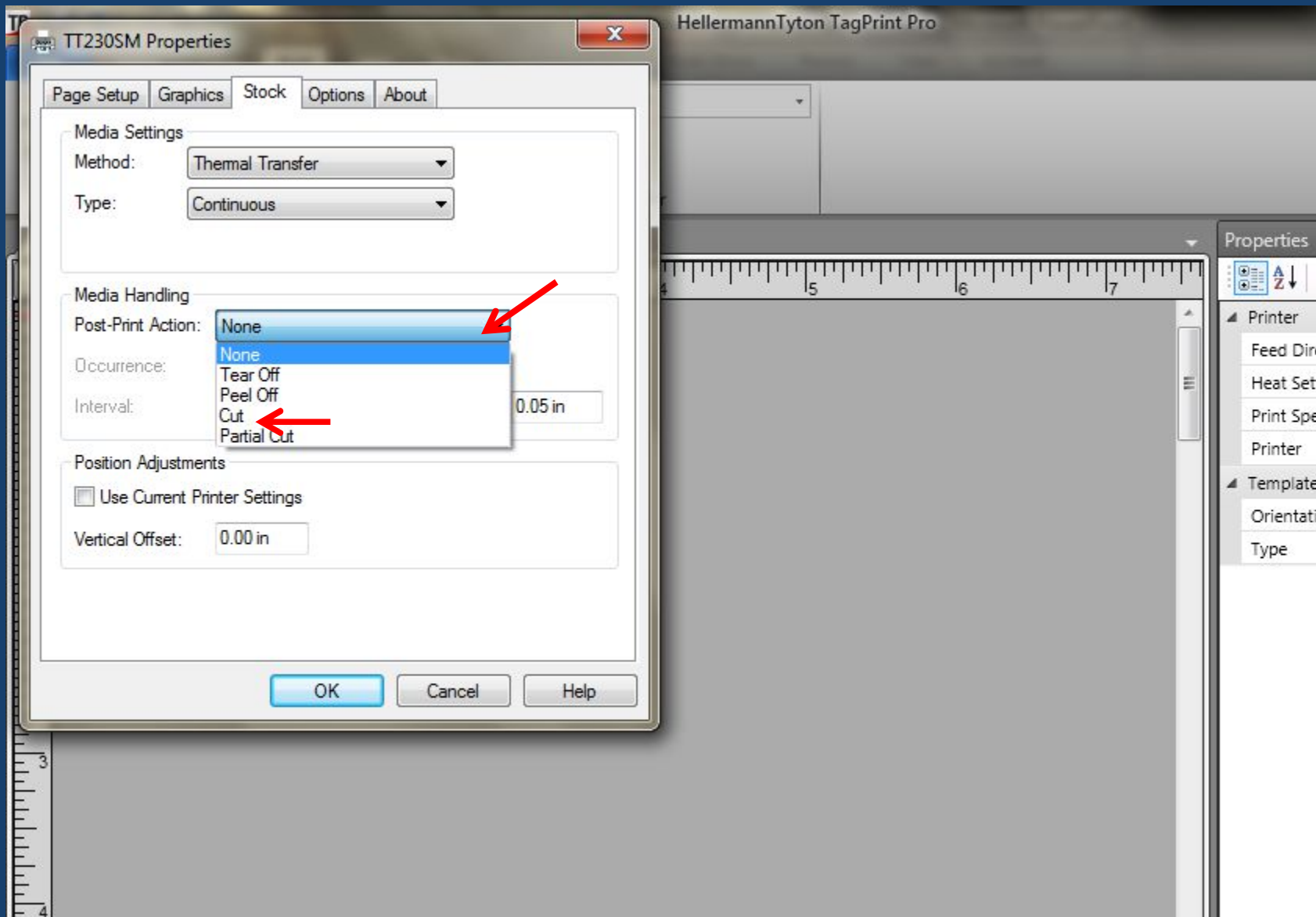


CLICK ON THE STOCK TAB IN THE TT230SMC PROPERTIES SCREEN

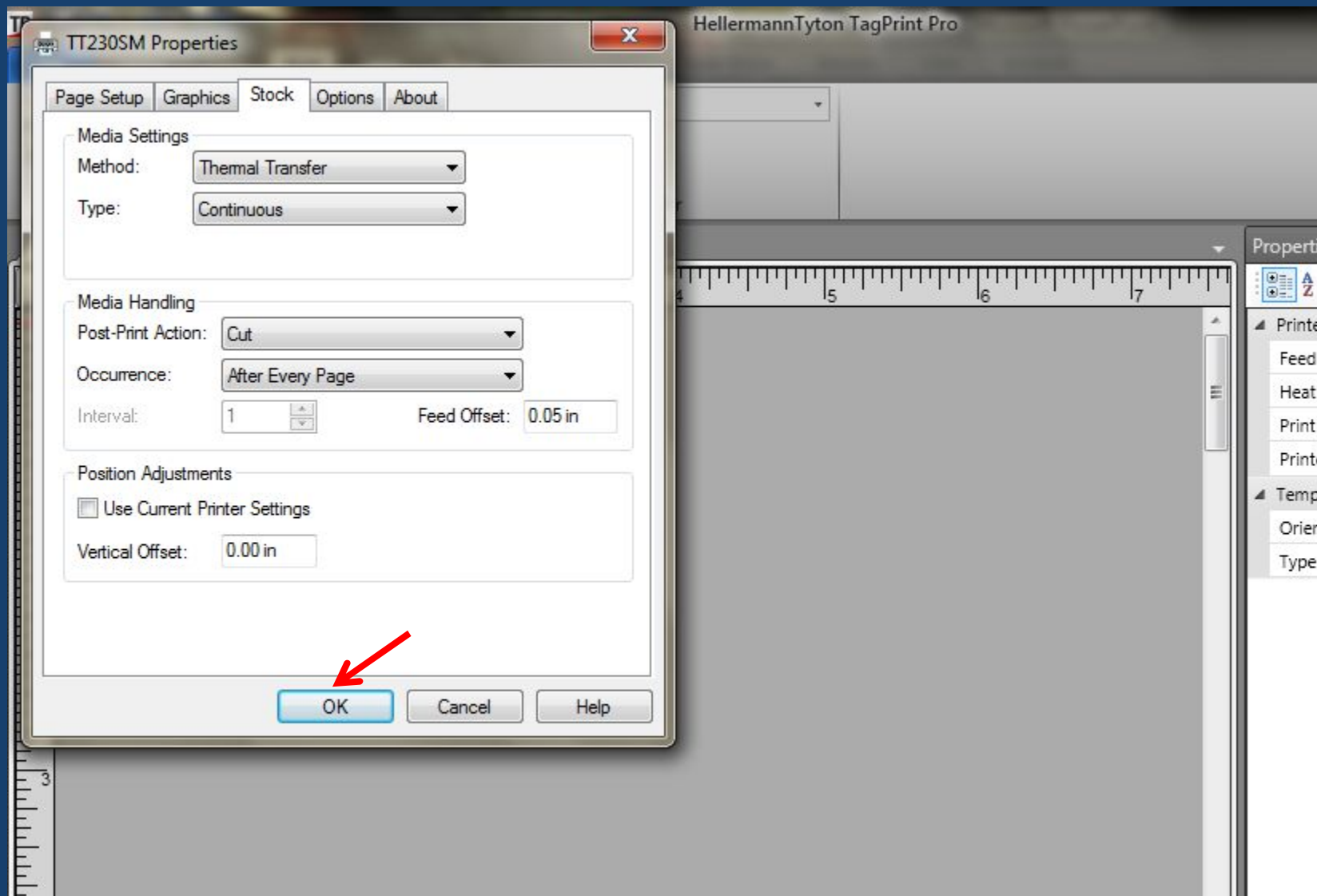




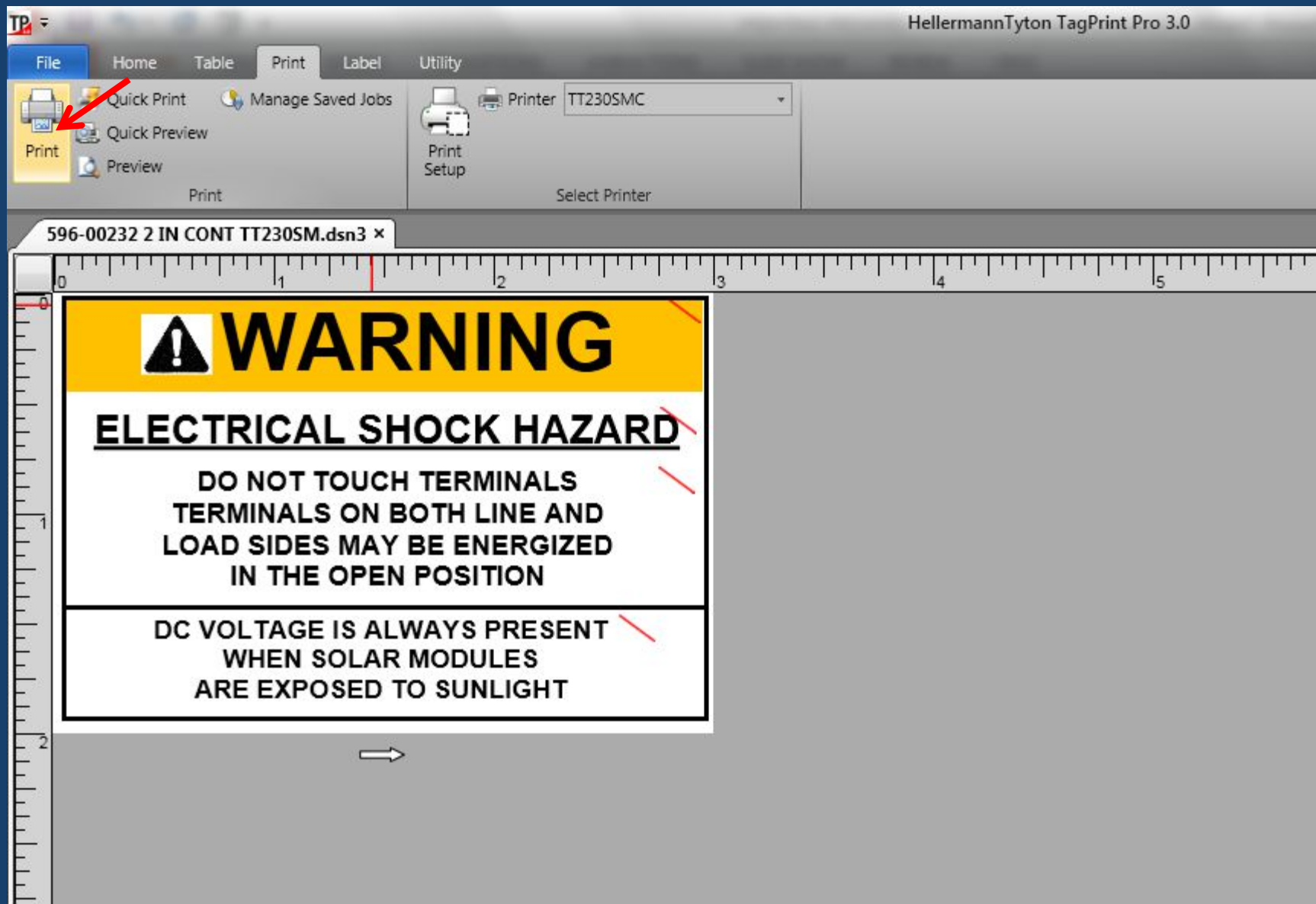
CHANGE THE "TYPE" SETTINGS FROM "LABELS WITH GAPS" TO "CONTINUOUS". IF THE PRINTER DOES NOT HAVE A CUTTER, THEN LEAVE POST-PRINT ACTION AS NONE AND CLICK OK.



IF THERE IS NO CUTTER ON THE PRINTER, THEN LEAVE POST PRINT ACTION AS NONE. JUST CLICK "OK". IF THE PRINTER HAS A "CUTTER" CLICK ON "POST-PRINT ACTION" AND CHANGE TO "CUT" THEN CLICK OK



WHEN FINISHED, CLICK "OK" MAKE SURE THE PRINTER IS LOADED WITH THE 2" PRE-PRINTED CONTINUOUS COLORED MEDIA (IF THAT IS BEING USED) AND THAT THE PRINTER IS IN GREEN LIGHT MODE.



CLICK ON PRINT

